

# THE HOTEL LOCK BY HOTEK

**20**  
YEARS OF  
EXCELLENCE





## MADE IN HOLLAND

HOTEK keycard systems are developed and designed  
in The Netherlands. EUR1 document available on request.



# BE DIFFERENT

In 1995 I started as a trainee at a Spanish lock manufacturer, back then a magnetic keycard was something completely new and luckily we had no mobile phones in 1995 so no issues with demagnetized magnetic keycards. 4 years later I created Hotek Hospitality Group and I promised myself that we will do our business different and unique. How ? By creating standard 24h service, new innovations and by listening to what the market needs. As a very frequent hotel guest I know how hotels can improve security and comfort and re-connect to your guests again.

Where are we now ? After 25 years we can all agree that the world has been changed by the internet and we have learned that a lock is not a lock anymore and keycards are getting outdated. In 1999 we were the first lock company introducing a smart keycard which could do more then only open a door. Now we have reached the era that Generation Z travellers will become the most mobile people that have existed, a new generation with literally no boundaries and the sky is the limit. Or shall we say that the cloud is the limit?

What is the most important for business and holiday travellers ? Mobile phone ? No that is just a tool of connecting to the internet. The most important for travellers and hotels is being online in order not to miss anything in life. And with our new mobile platform GUESTKEY we can offer your hotel a new way of connecting to their guest. With this new platform your guest is able to use an QR code, Bluetooth (BLE) or our own invention CLE which stands for opening doors through the cloud by using a Cloud Low Energy controller inside the hotel lock. And by our (web)app you are able to do upselling, higher reviews by creating an on-line guest experience and get in control about your guest contact.

At Hotek Hospitality Group our VISION is based on Comfort, Security and Innovation. With our unique approach of looking at your guest and your hotel. As an independant company with a proven track record and financial stable base we are not looking only for turnover. We want to change the access control inside the hospitality market by launching innovations like CLE, GenerationZ and GUESTKEY, IoT is the base for the future for you and for us. With online tools all hotels, holiday parcs and passenger ships can improve the security and comfort for your guests.

After the introduction of CLE where we offer realtime management tools and easy mobile opening, we will also launch a very unique hotel lock: GenerationZ. The name reflects the travellers of tomorrow. Mobile opening in combination with RFID keycard or unique cloud controlled QR code. This lock is the missing link for all situations where our customers demands more then only opening a door. Imagine a world where you can use your airplane boarding pass to open your hotelroom, use your boarding pass to open a shower at an airport lounge, or use your QR code for boarding on a ship. Future ? No we already have done this, and now this is available for all our customers.

With this HOTEK book we would like to give you an overview of our keycard locks and other products related to acces a hotel room. I would like to thank you for the interest in our company and looking forward to meet you in your hotel or our state-of-art showroom. And if you are already using a HOTEK lock don't worry we can upgrade with CLE and GenerationZ.

Best regards,

**Dolf Mulder**  
CEO & Innovater of Hotek Hospitality Group

*PS: by being different we make the difference*





# CONTENT

- 2 • Preface
- 6 • Introduction
- 8 • Classic
- 38 • Upgrade kits
- 46 • Mini Design
- 70 • Camouflage
- 76 • Door fittings Mini
- 78 • Small Line
- 92 • E-Cylinder
- 98 • Generation X QR Code
- 104 • Generation Z
- 112 • Smart DND Panels
- 142 • Extra for your hotel
- 148 • Lock & Software specifications
- 154 • Official paperwork
- 158 • Our Facilities
- 174 • References
- 180 • One stop shopping





**MARKET  
LEADER**

**INNOVATOR**

**20 YEARS OF  
EXPERIENCE**

**OVER 1.5 MILLION  
LOCKS INSTALLED**

**ISO 9001  
2015**

**9000  
CUSTOMERS  
WORLDWIDE**

Hotek Hospitality Group is manufacturer and supplier of smart security systems and design supplies for the hospitality business. The combination of the two brands Hotek Hotel Locks and Be Dutch hotel supplies offers a full-service model and one-stop shopping service for hotel management.

With over 20 years of experience Hotek's mission is to lead the hospitality business into the next decade offering innovative security solutions with which their clients can stay ahead of the field.

**DELIVERY  
FROM STOCK**

**24H / 365 DAYS FULL  
SERVICE  
SUPPLIER**





# CLASSIC

The Classic, the foundation of Hotek. 20 years of excellence, used on more than 1 million hotel doors.



**FUTUREPROOF THE FIRST  
THE BEST  
THE STANDARD**

**FITS EVERY DOOR** **NO MAINTENANCE** **MOBILE READY**  
**ANTI-PICK**  
**WITH OR WITHOUT MECHANICAL CYLINDER**







Hotek Classic - Stainless steel

















*Hotek Classic - Stainless steel (inside)*





















*Hotek Classic - Stainless steel*











*Hotek Classic - Stainless steel*



MA DI WO DO VRI ZA ZO  
**24**  
OKTOBER

ANNA J. VAN STUIJVENBERG • STILL • WWW.ANNAJVANSTUIJVENBERG.NL

De herinnering van de ervaring en de visuele aspecten van de plek vormen de inspiratie voor de site-specifieke installaties. Deze herinnering van de ontmoeting met de plek, mijn bewaarspelen van die plek en de verwondering over de kwetsbaarheid van dat ogenblik, het Gesus Loci. Deze 'vindplaatsen' zijn vaak onbestemde plekken, vergeten ruimtes en landschappen waar de natuur zijn gang gaat. De 'herinnering' wordt getransformeerd in materiaal en vorm waarbij de fysieke gegevens en de sfeer van de tentoonstellingsruimte bepalend zijn en het kader geven.





# EASY TO CHANGE

ONE SOFTWARE FOR  
ALL LOCK SYSTEMS

EXPAND THE  
LIFE TIME  
OF YOUR  
CURRENT  
LOCK SYSTEM

SUSTAINABLE

NO MORE  
NOT WORKING  
MAGSTRIPE  
CARDS

## UPGRADE KITS

Developed to transform an existing  
magstripe lock into a RFID lock.

















# MINI DESIGN

Our first and very own design based on the iPhone,  
created for design hotels.



**BE LIKED** **MADE IN**  
**HOLLAND**

# **DESIGN LOCK**

**AVAILABLE WITH DESIGN HANDLES**

**SMALL** **MOBILE**  
**INGENIOUS**  
**STYLISH** **READY**  
**MODERN**

**YOU LIKE APPLE?**











*Hotek Mini & Cruz door handle - Stainless steel*





Hotek Mini & Cruz door handle - Stainless steel













Hotek Mini & Cruz door handle - Stainless steel





Hotek Mini & Ace door handle - Black





Hotek Mini & Benz door handle - Black











Hotek Mini Elite XS (from 2020)



DESIGN FIT, STYLISH  
AND MODERN

---

HIDDEN

---

WHERE IS THE LOCK?

---

DIFFERENT MODERN

---

NOT  
VISIBLE

CAMOUFLAGE

---

Evolved from the Mini and developed for architects  
who don't want a visible card reader on the doors.





Hotek Camouflage & Special made door handle by Piet Boon







# DOOR FITTINGS MINI



ACE



AVAILABLE IN

Stainless  
steelPVD  
brassPVD  
anthracite

Black

PVD (Physical Vapor Deposition) is a coating which protects the products against wear and corrosion.



BENZ



AVAILABLE IN

Stainless  
steelPVD  
brassPVD  
anthracite

Black



CRUZ



AVAILABLE IN

Stainless  
steelPVD  
brassPVD  
anthracite

Black



DEX



AVAILABLE IN

Stainless  
steelPVD  
brassPVD  
anthracite

Black





# SMALL LINE

---

Developed for bungalow parks in particular that often use doors with glass on which only a Small Line would fit.



ALWAYS FITS  
ON ANY DOOR

BE SMALL

NARROW USE BE  
DOORS BUNGALOW  
GLASS HOLIDAYS  
DOORS OUTSIDE PARKS







*Hotek Small Line - Stainless steel*









Hotek Small Line - Stainless steel









*Hotek Small Line, no cylinder model - Stainless steel*



**EASY  
INSTALLATION**

---

**ULTIMATE FIT**

---

**SPECIAL  
FOR  
DIFFICULT  
DOORS** **NO CHANGE DOOR  
OR DOOR FRAME**

---

**DO IT YOURSELVES**

---

**FIRE PROOF**

# **E-CYLINDER**

---

Developed for doors on which no lock would fit but work with a mechanical cylinder, so that's the only thing we need to replace.













# GENERATION X QR CODE

Designed for hotels without check-in, here functions goes over form, let's say the Volvo of new and innovative locks.



BE SMART  
AND GO FOR  
PAPERLESS OR  
PAPER ONLY

**ONE OF  
A KIND**

**FLEXIBLE** CHECK-IN  
& EASY  
ACCESS

USE CARD, CODE OR PAPER

THERE **IS NO** **OTHER** **LOCK** **NO** **KEYCARD** **COSTS**

**ALWAYS** **MOBILE**











# GENERATION Z

The hotel lock of the future, designed for GenerationZ travelers, in other words the mobile hotel guest.



USE CODE, CARD,  
BARCODE OR QR CODE

# BE INTO THE CLOUD AND ALWAYS MOBILE

---

# NEXT LEVEL

---

# EASY NO

# ACCESS KEYCARD COSTS







Hotek Generation Z - Stainless steel





*Hotek Generation Z, no cylinder model - Stainless steel*





# SMART DND PANELS

Developed for hotels (long stay) that are different.



ON-LINE CONTROL  
ON-LINE ACCES

PERSONALISED

DO-NOT-DISTURB COMFORT FOR GUEST  
AND HOUSEKEEPING

EXCLUSIVE REAL  
PRIVACY

DING DONG











301









Hotek Smart DND Panel

















Hotek Smart DND Panel (in- & outside)













Hotek DND Panel & Hotek Small Line - Stainless steel









*Hotek DND Panel (inside) & Hotek Small Line (inside) - Stainless steel*



# EXTRA FOR YOUR HOTEL











# LOCK & SOFTWARE SPECIFICATIONS

---



# SPECIFICATIONS

LOCK MODELS	CLASSIC	UPGRADE KIT	MINI & CAMOUFLAGE	SMALL LINE	E-CYLINDER	GENERATION X	GENERATION Z	DND PANEL
OPENING WAYS								
RFID keycard offline	•	•	•	•	•	•	•	•
RFID keycard online							•	•
QR Code offline		•				•	•	
QR Code online							•	
Mobile phone BLE	•	•	2021	2021		2021		•
Mobile phone CLE	•	•	•	2021		2021	•	•
MECHANICAL EMERGENCY KEY								
Key different (standard)	•	•	•	•	•	•	•	
Mechanical key MASTER	Option		•	•		Option	Option	
No cylinder model	•		•	•		•	•	
LOCK FEATURES								
Privacy function	•	•	•			•	•	
Anti-panic function	•	•	•			•	•	
Door alarm	•					•		
Anti-pick lockcase	•	•	•			•	•	
Battery alarm	•	•	•	•	•	•	•	
Memory 1000 events	•	•	•	•	•	•	•	•
Battery operated	4XAA	4XAA	3XAA	3XAAA	1/2AA	4XAA	4XAA	
Longlife lithium battery pack	•	•				•	•	
FINISHES								
Design wrapping	•			•		•	•	
Stainless steel	•		•	•	•	•	•	
Satin brass	•		•			•	•	
Brass PVD			•					
Black edition	•		•					
Anthracite PVD			•					
Special colours on request	•		•			•	•	

SMART - CARDS AND CODES							
Guest Card RFID	Max. 16 guest doors on one card	Max. 128 common doors	Can be blocked by using a new card				
QR Guest Code	Max. 8 guest doors on one code	Max. 128 common doors	Can be blocked by using a code	Only for Guest!!			
Master Card RFID	Works on ALL doors		Individual time zone and days of the week	Can be blocked individually or by group			
Floor Card RFID	Max. 16 Floors	Max. 128 common doors	With individually set end date	Individual time zone and days of the week		Can be blocked individually or by batch (max. 16 cards)	
Zone Card RFID	Max. 16 predefined HSKP Zones/ Foreman Zones/ Extension Zones	Max. 128 common doors	With individually set end date	Individual time zone and days of the week		Can be blocked individually or by batch (max. 16 cards)	
Staff Card RFID	Max 16 offices	Max 128 common doors	With individually set end date	Individual time zone and days of the week		Can be blocked individually or by batch (max. 16 cards)	
Repair Card RFID	Can be made for max. 16 individual rooms	Max 128 common doors	With individually set end date	Individual time zone and days of the week		Can be blocked individually or by batch (max. 16 cards)	
SMART - LOCKING PLAN							
Infinite guest rooms							
Layer function	Layer function can be used to combine doors to one suite or to create multiple bed numbers for a hostel						
Common Doors	128 individual common doors can be created. Common doors can also be programmed multiple times						
Common Door Zone	Common Doors can be put together in a pre-programmed template. By one click, the correct common doors are selected						
Auto Open	Common Doors can be set with automatic open time during opening hours						
Restrict Times	Common Doors can be set with a disable time during closing hours, with exceptions for certain types of keys						
Check-in and Check-out time	Check-in and check-out time can be adjusted						
SMART - SECURITY AND MANAGEMENT							
Erase Card RFID	To individually block one or more staff keys						
Programming with cards	Standard	By Programming with cards you can always program, and you are not relying on a programmer that needs to be charged and updated					
Programming with PDA	Option	The PDA holds the complete locking plan, so multiple doors can be programmed and audited in one go					
Revalidator	Option	Using the revalidator the staff cards validation is limited to 24 Hours. After 24 Hours the card needs to pass the revalidator to be activated again					
Readout last 250 events by card	Standard	Using the Readout Card, 250 events can be obtained from the lock at 1 time. Data needs to be processed at the software before reading out another lock					
Readout last 1000 events by PDA	Optional	Using the PDA, multiple locks and can be audited at the same time. Data can be processed in 1 time at the software					
User Accounts	User accounts can be set individually with authorizations						
Card Info Report	Overview of all current and passed keys						
Log Report	Overview of the logged on users						
Audit Trail Report	Memory of 100 Lock Audit reports that have been done in the passed (1000 openings per lock)						
Registered events	Rejected try - inside opening - deadbolt un/locking - openings by reader						
Network monitor	Online locks only	Shows the current status of the online locks and can be used to obtain lock info and readout reports from online locks					
Anti-pass back	Wallreader	For parking entrance & exit					
Counter function	For control of paid services like swimming pool or sauna etc..						



SMART - ENCODERS & SOFTWARE		
USB Encoder	Standard	Directly connected to the desktop the user is working on
TCP/IP Encoder	Option	Suitable when there is no desktop computer or no direct connection with the encoder
SQL Database	Central SQL Database	
QR Code Printer	Ticket printer for the QR Code ticket	
SMART - INTERFACES		
PMS - TCP/IP	Standard PMS Interface with TCP/IP Connection and Hotek protocol supporting all functionality	
PMS - FIAS	Standard PMS Interface with TCP/IP Connection and FIAS protocol (FIAS protocol does not support all Hotek functionality)	
“Encoder 99”	Encoder 99 PMS interface can be used with check-in kiosk to obtain keycard data to be written on third-party encoder	
Extra Sector / POS	Interface can write extra data in an open sector such as a reservation number to be used by thirth parties.	
QR Code	PMS system can obtain the QR code or the QR code can be sent to an email address with a simple email template	
WALLREADER		
RFID Offline	SMART standard model or with separate control unit	
RFID Online	SMART TCP/IP model with separate control unit & Generation Z with dry contact	
QR Code Offline	Generation X standard model	
QR Code Online	Generation Z with dry contact	
CLE	Dry contact model	
Elevator controller	SMART wallreader with relay box for control 16 floors, can be extended unlimited	
GUESTKEY - MOBILE TECHNOLOGY		
BLE	Standard SDK Solution to integrate Bluetooth Mobile key into the hotel app	
CLE	Cloud solution through RestAPI – enables you to open the lock remotely using mobile technology	
Generation Z	Tailormade cloud RFID, QR code and barcode solution – more information on request	
GUESTKEY - GATEWAYS		
BLE	Cloud control – online opening door (with delay) – online control of doors & users BLE	
CLE	Cloud control - online opening door (without delay) – online control of doors & users CLE	
Generation Z	Cloud control - online opening door (without delay) – online control of doors & users QR codes & RFID keycards	
GUESTKEY - PLATFORM		
BLE	APP controlled – only lock SDK	
CLE	WEB-APP controlled – with extra Guest Experience options (SILVER – GOLD – PLATINIUM)	

SMART - KEYCARDS, KEYFOBS, WRISTBAND, STICKERS	
Mifare RFID S50	Guest card encrypted unique code – OPEN mode also possible
Mifare RFID S70	Staff card use with write back function, openings of door are also stored on keycard – virtual network function
ENERGY SAVING UNIT	
Standard	Working on any keycard
Mifare	Working on Mifare RFID Keycard only
2-relay	Working on programmed RFID Keycard only, with separate authorization for guest and staff

- Next to the latest SMART platform we can also offer CLASSIC platform with limited functions, ask your HOTEK advisor for more details.
- For Generation Z this is a tailor made platform with unlimited functions, ask your HOTEK Product manager for more details.



# OFFICIAL PAPERWORK



# CERTIFICATION



**ISO 9001 : 2015**  
The management system of Hotek is ISO 9001:2015 certified. Processes are monitored and optimised continuously in order to offer the best products and services.



**FIRE SAFETY**  
Hotek CLASSIC locks are Fire resistant in accordance with European Standards. EN 1634-1:2014



**YOU ARE  
ALWAYS  
WELCOME TO  
VISIT HOTEK!**

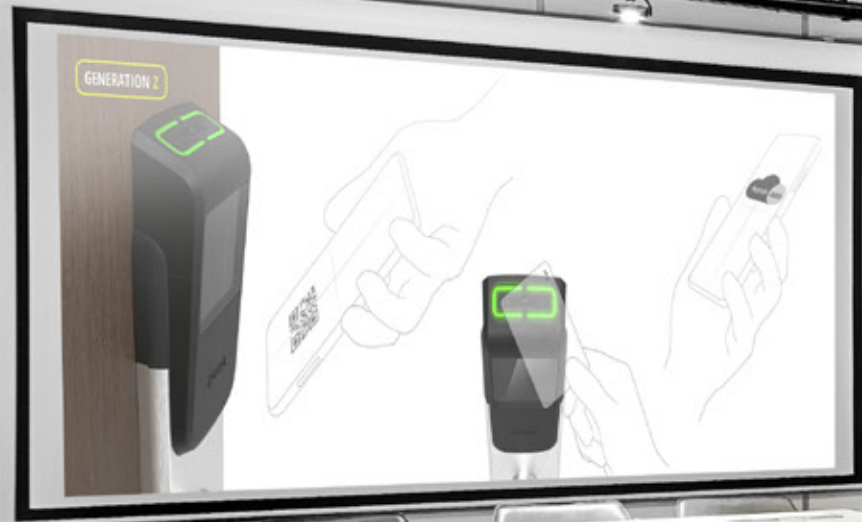




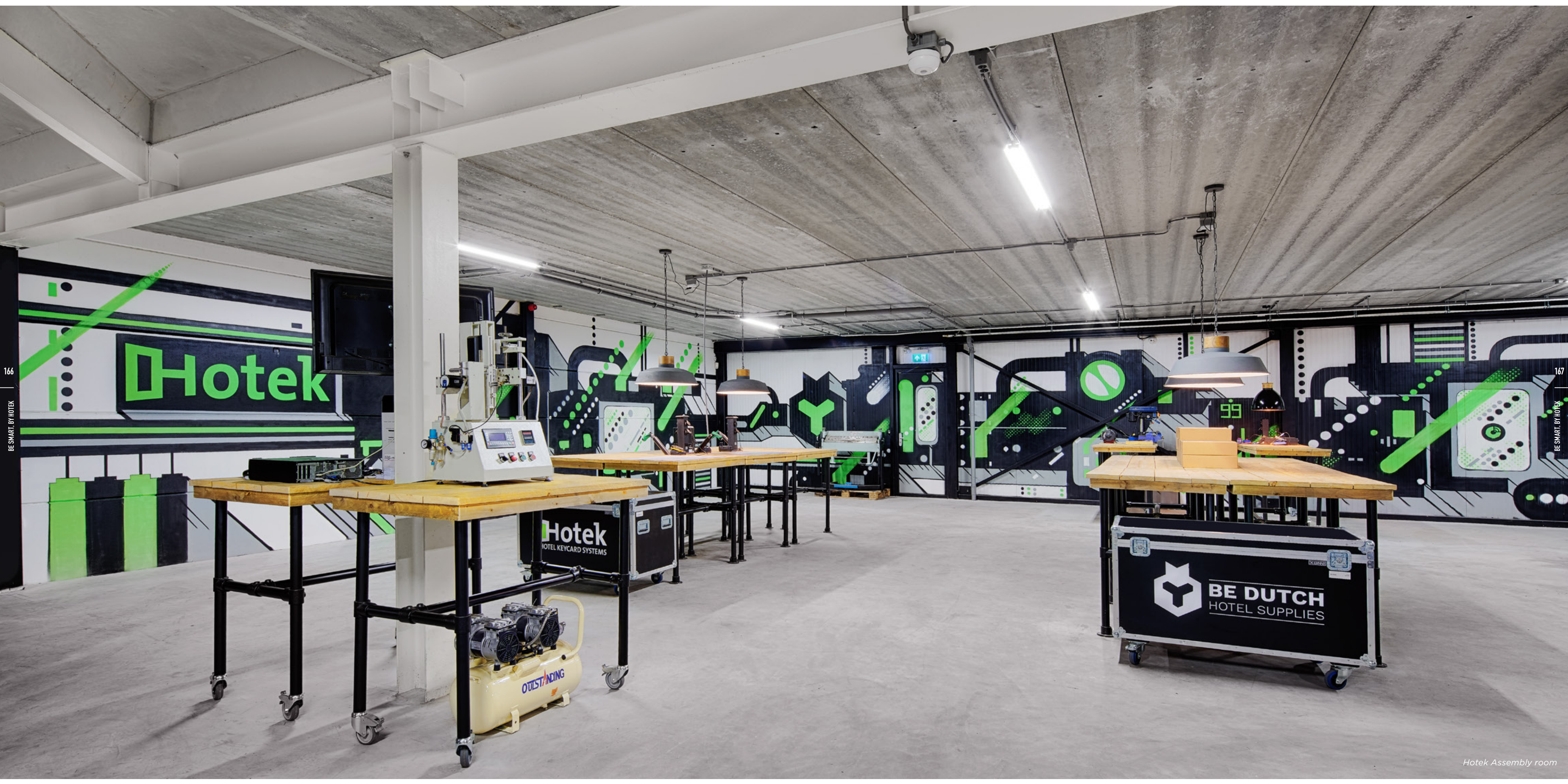




















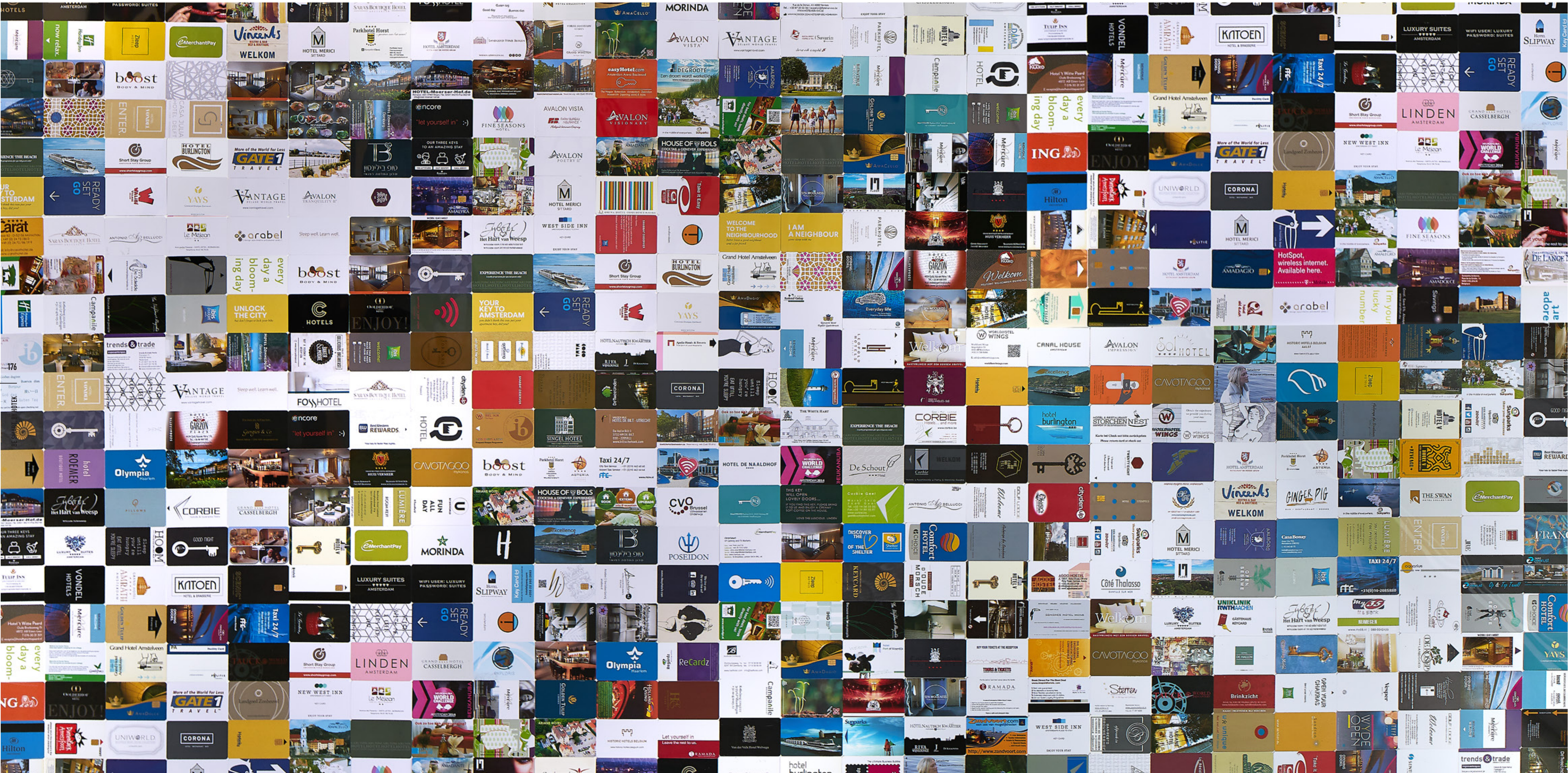






# REFERENCES







BE SMART  
BUY HOTEK  
GO DUTCH

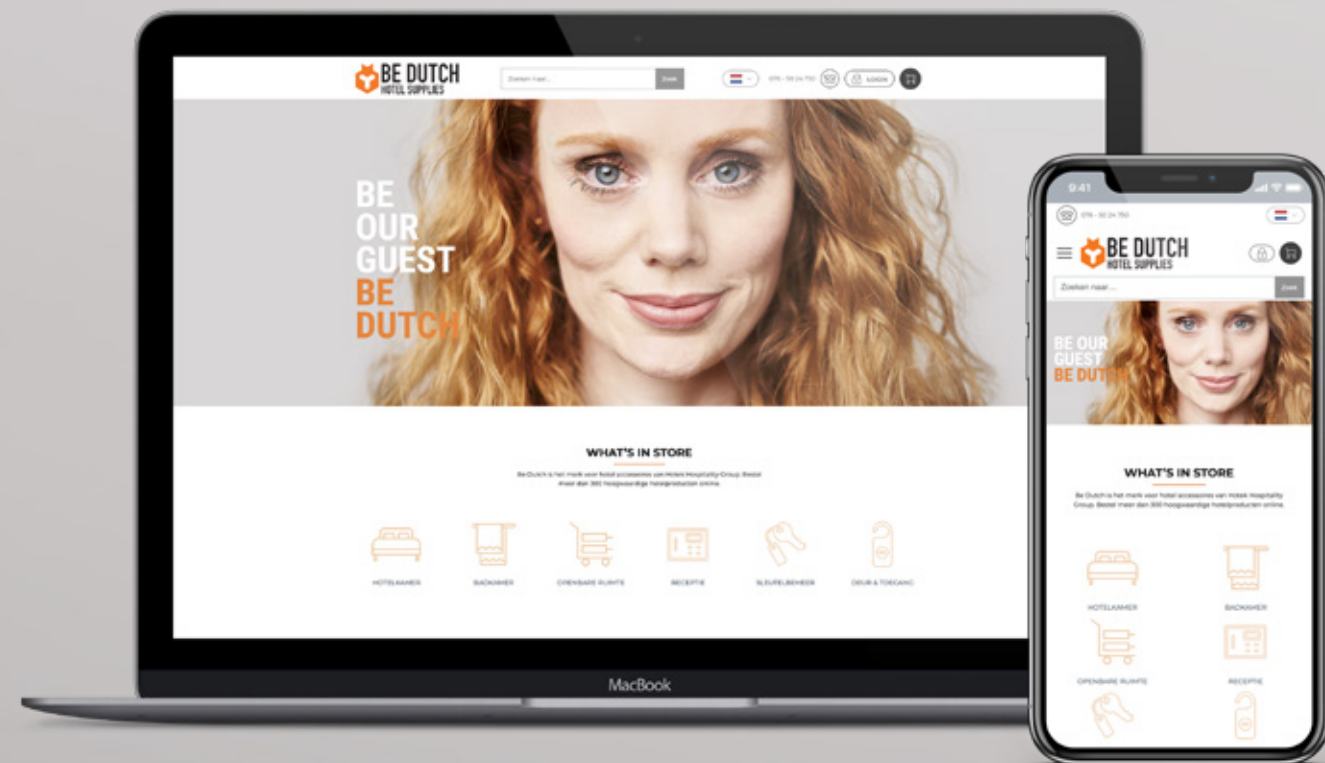


# ONE-STOP SHOPPING

Be Dutch is the in-house brand for hotel supplies of the Hotek Hospitality Group and offers over 300 hotel products online.

## BENEFITS

- » One stop hotel shopping
- » Delivery from stock
- » Order history online and easy repeat ordering
- » Budgets and authorisation
- » Order for multiple locations and addresses











---

**HOTEK HOSPITALITY GROUP**

Munnikenheiweg 27

4879 NE Etten-Leur

+31 (0)76 50 24 750

[www.hotek.nl](http://www.hotek.nl)

[info@hotek.nl](mailto:info@hotek.nl)

24h service: [service.hotek.nl](mailto:service.hotek.nl)